



INRECO LAN

SOFTWARE DEVELOPMENT

From coding to R&D

ABOUT THE COMPANY

Inreco LAN has 30-year experience in successful software development. Our Company cares about its customers.

We strongly believe that each project must be completed on time and within the established budget, in accordance with all requirements — both initial and the ones that emerge in the development process. To ensure this, we work closely with our customers, using well-structured, industry-standard development processes in each project.

An important advantage for our clients is the possibility to use well-educated highly qualified specialists even in projects with a modest budget.

We have extensive experience in managing projects of different nature.

This allows us to successfully work on any task, from the creation of small prototypes to the implementation of complex systems, using the full development cycle.



In the software market since 1998



300+ successful projects



1M+ hours of development



100+ satisfied customers

BACKEND

Java, .NET, PHP, Node.JS, Python

FRONTEND

React.JS, Angular, Vue.JS

MOBILE / CROSS-PLATFORM

Android, iOS, Xamarin, Cordova, Qt

CLIENTS



BANKING SOFTWARE

Front-office system*

This solution is used in a large Russian bank.

System of remote banking customer service*

This solution is used in a large Russian bank.

Financial portal, including an electronic trading platform, Internet bank, etc.

Document scanning and storage system*

Creation of a solution to automate business processes in terms of input, management, storage and corporate search for documents for bank needs in Russian Federation.



BETTER WORLD BOOKS

INDABA SYSTEMS (USA)

System for simultaneous trading on several marketplaces. Including full-featured back-end subsystem.

The application allows customers to sell books and other products simultaneously on more than 30 electronic marketplaces (including Amazon.com, eBay.com, Half.com).



RETAIL / ECOM

Retail automation solution*

Cash registers and internal processes, product adaptation for specific retail chains.



Service for quick and deliberate purchases*



mongoDB®



elastic

Development of individual modules and components*

Solutions for online catalogue and store.



MICHELIN

RUSSIA AND THE CIS

Internal services to support logistics department work in shipment planning and controlling.

A web-based system for managing Michelin tire product claims, from claims issue by dealers to their processing by company employees.

Client-server application for warehouse management.



LOGISTICS / CARGO TRANSPORTATION

Tender platform for cargo carriers*

Interaction with carriers and forwarders in the provision of transport services for long-distance and international transportation of goods:

- Price offers collection;
- Automatic winner determination;
- Supervising the implementation.



* project details are protected
by a non-disclosure agreement (NDA)



LOGISTICS / CARGO TRANSPORTATION

Mail accounting information system for postal company operators*

Development of user accounts for transport company contractors, universal application for cargo collection and trading platform.



* project details are protected
by a non-disclosure agreement (NDA)



TRANSPORT / TRACKING

Equipment turnover control*

Onboard kitchen equipment turnover control system for one of the air carriers.



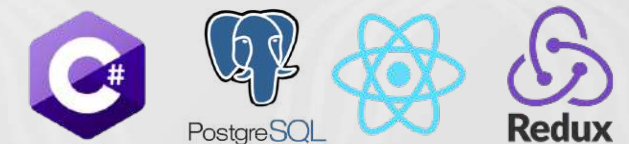
Hardware and software complex for road monitoring*

Service and web-based system for measuring traffic flow intensity parameters, detecting and recording incidents.



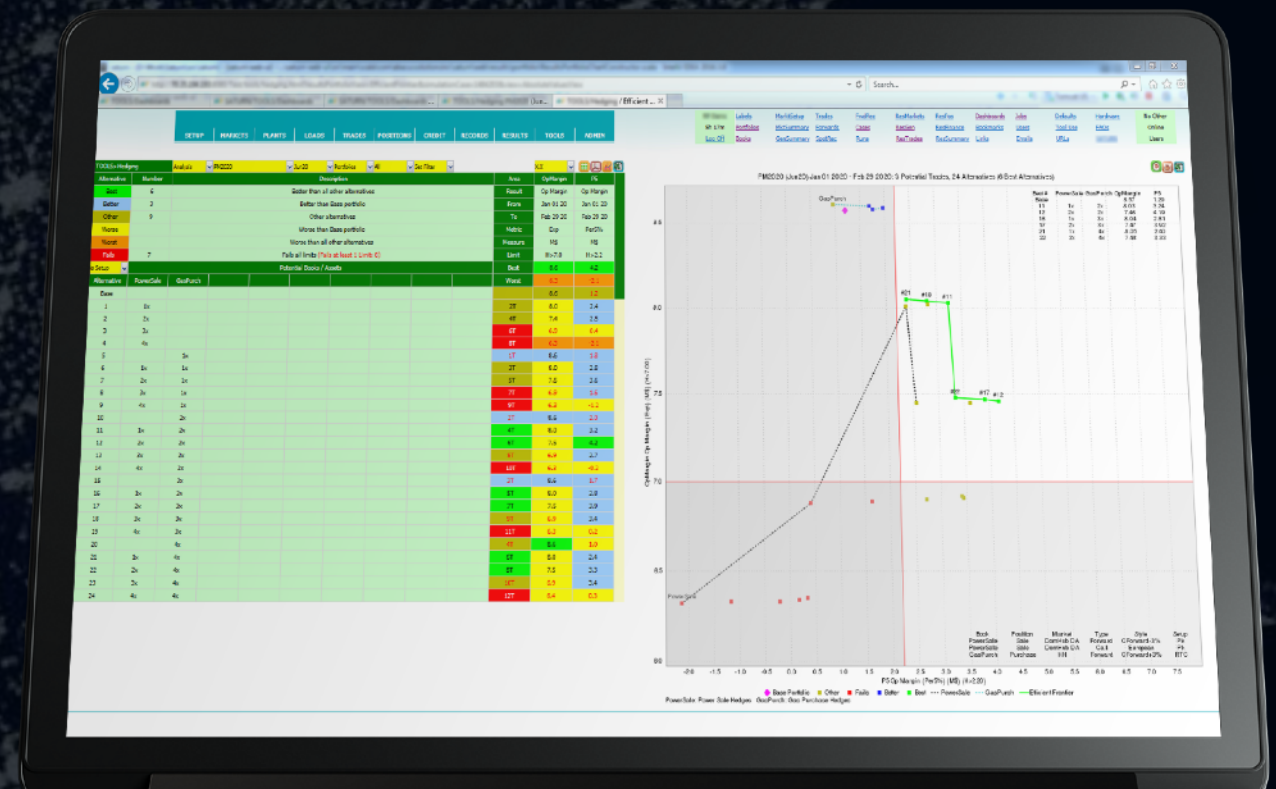
Automated system for predicting vehicle arrival*

The system allows to bind stops to display panel, set routes, store data on vehicles. Based on these data, the vehicle arrival time is predicted and displayed.



CUSTOMER: ABACUS SOLUTIONS (USA)

The image shows three logos side-by-side: the Scala logo (a red square with three white horizontal bars), the Java logo (a blue coffee cup with orange steam), and the Ext JS logo (a blue gear icon next to the text 'Ext JS' in blue and green).



ENERGY SECTOR

Power consumption analysis*

Web portal that allows large retail power consumers to analyse, plan and optimise power costs online.

Analytical system for recording and monitoring heat/power supply indicators*



* project details are protected by a non-disclosure agreement (NDA)

GOVERNMENT



AVO.RU

Official Internet portal of
the Administration of Vladimir region

GIS, development of a dynamic section of legal acts.



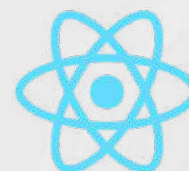
GOVERNMENT

Citizen appeal processing portal*

Development of a portal for processing citizen appeals on health, culture, education, employment, housing services and other issues.

Information and analytical system*

Development of a system of comprehensive information & analytical support for the activities of one of the financial institutions.



* project details are protected by a non-disclosure agreement (NDA)



GOVERNMENT

Electronic document management system components*

Development of individual electronic document management system modules and components for one of the financial institutions.

Unified statistical accounting system*

System for the unified statistical accounting of reports of crimes, criminal activity and crime detection rates.



ORACLE



* project details are protected by a non-disclosure agreement (NDA)

DREAMBOAT

Software to automate the processing and storage of data collected under the Bali Guide project (Indonesia).



WEB-PORTALS



TLUM.RU

Family information and entertainment portal.



CROSS-PLATFORM PROJECTS

Series of cross-platform projects with an American partner, based on its own RAMP framework, which allows to create mobile and web applications.



TIME MANAGEMENT / HR

Information system for collecting and unifying data

from various ITSM systems in order to automatically calculate project metrics and provide managers with data on their projects.

Staffery

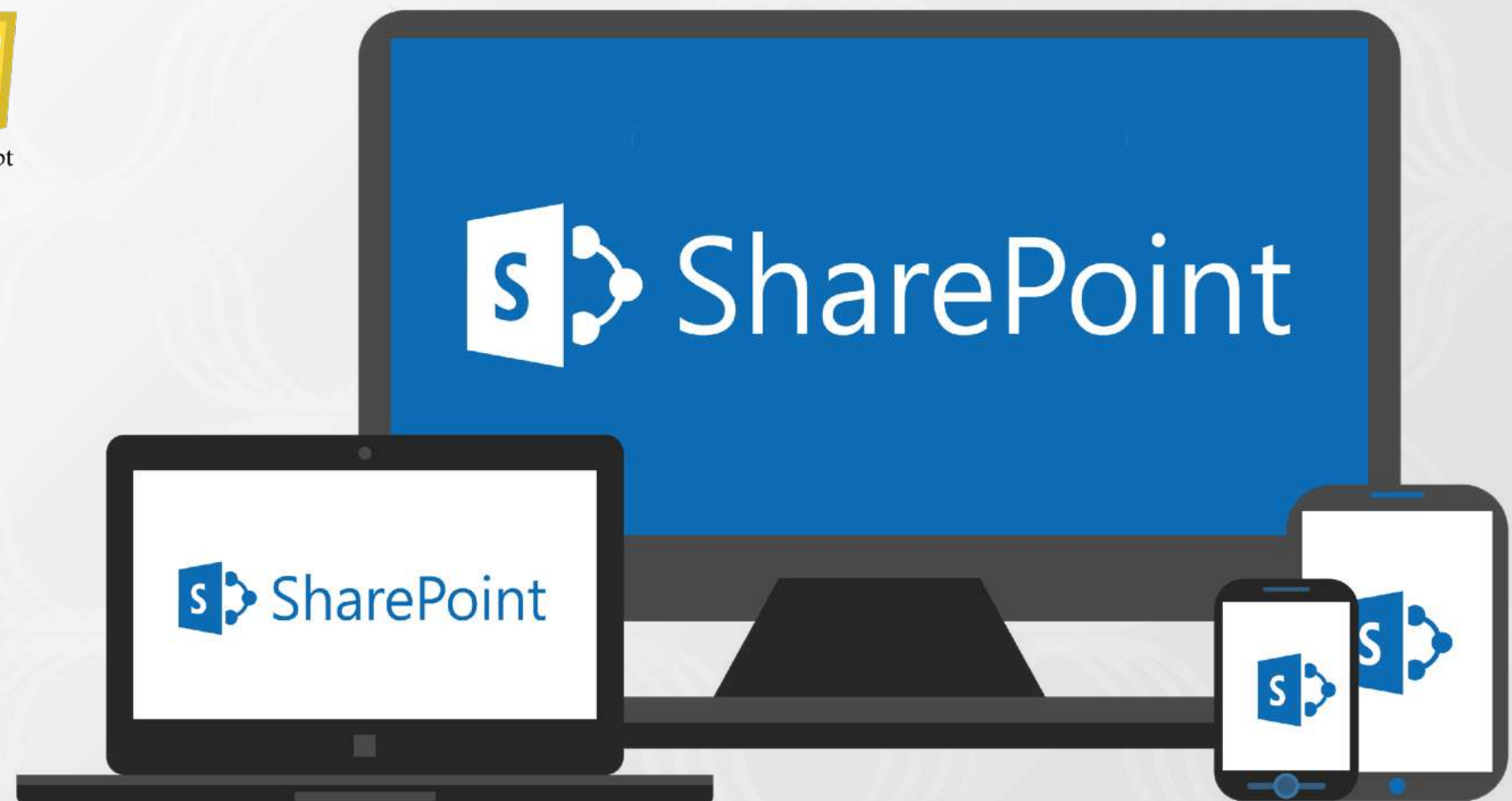
A web-based application for storing, searching and managing company personnel information: education level, professional experience, training, relevant knowledge and skills, participation in projects.



CUSTOMIZING MS SHARE POINT

CUSTOMERS: ABI PRODUCT, ASKONA

Support and development of internal corporate portals.
Business processes, services, integration.



MES



Q-GLASS

CUSTOMER: ELABUGA FIBERGLASS

MES-quality control and online monitoring of manufactured fiberglass.



MESCLOSURES

CUSTOMER: SEAQUIST CLOSURES, LLC

Software for production accounting of the manufactured products at the plant.



CLEANROOM

Design engineer's tool intended for simulation of the air movement processes in the so-called clean room.

Clean production premises shall meet GOST requirements on clean air, temperature and speed.



FUZZYMATH

Module for working with fuzzy logic in OpenOffice Calc.





INRECO LAN

R&D / SOCIAL

PONY

TABLET FOR THE ELDERLY

Software shell that makes the tablet computer convenient for use by the elderly or people with disabilities.



magnoliyan



CONTACTS

Address:

Russia, 600036, Vladimir, 73 Lenina Pr.

Tel.:

+7 (4922) 44-40-90

E-mail:

marketing@inrecolan.com

Web-site:

inrecolan.com